

**UNITED STATES PUBLIC LAND SURVEY CORNER CERTIFICATE FOR**

Land survey monuments situated in Section 34, Township 106 North, Range 40 West, of the Fifth Principal Meridian, Murray County, Minnesota..

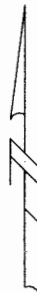
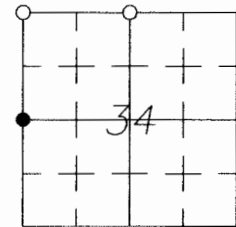
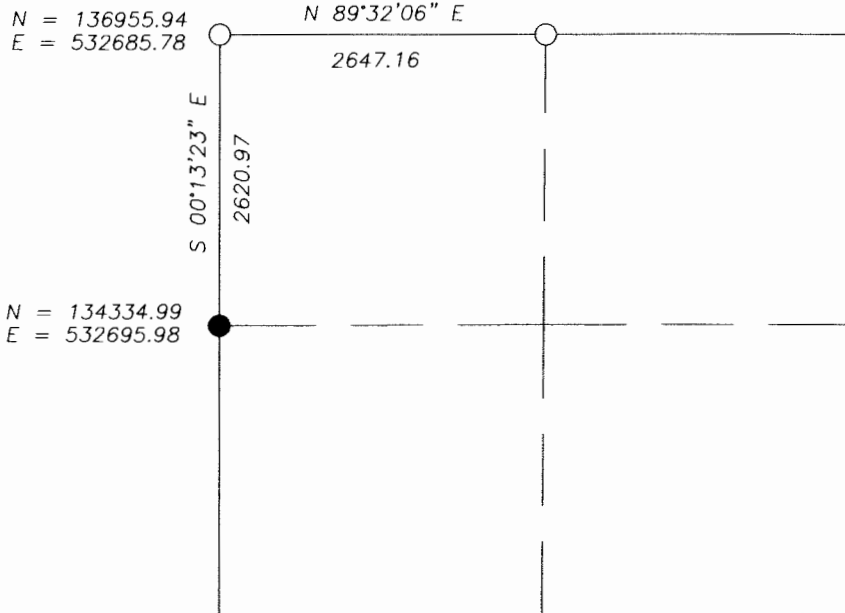
Previously recorded in N/A in County Recorder's Office.

(Show reason for preparing this certificate, the evidence and detailed procedure used in establishing the corner position & monumentation found or placed.)  
 MONUMENT DESCRIPTION AND REMARKS: On April 26, 2007 we searched for Northwest corner and North 1/4 corner of section 34 where state and county records indicated iron monuments but found nothing; We then set a 1" Iron Pipe with survey cap 23008 at NW Corner from state and county records and set a survey marker in bituminous road at North 1/4 corner location as per county ties.

MURRAY COUNTY COORDINATES

**PLAN-VIEW**

N = 136977.43  
E = 535332.85



I hereby certify that this land surveying document was prepared and related survey work was performed by me or under my direct supervision and that I am a duly licensed Land Surveyor under the laws of the State of Minnesota.

Perry L. Zieske 5-1-07  
 Signature Date  
 Perry Zieske  
 License number 23008

Sheet 1 of 1

Corners to be Indexed

Corners	Section	Township	Range
NW	34	106	40
N 1/4	34	106	40

MAY - 3 2007

James V. Johnson